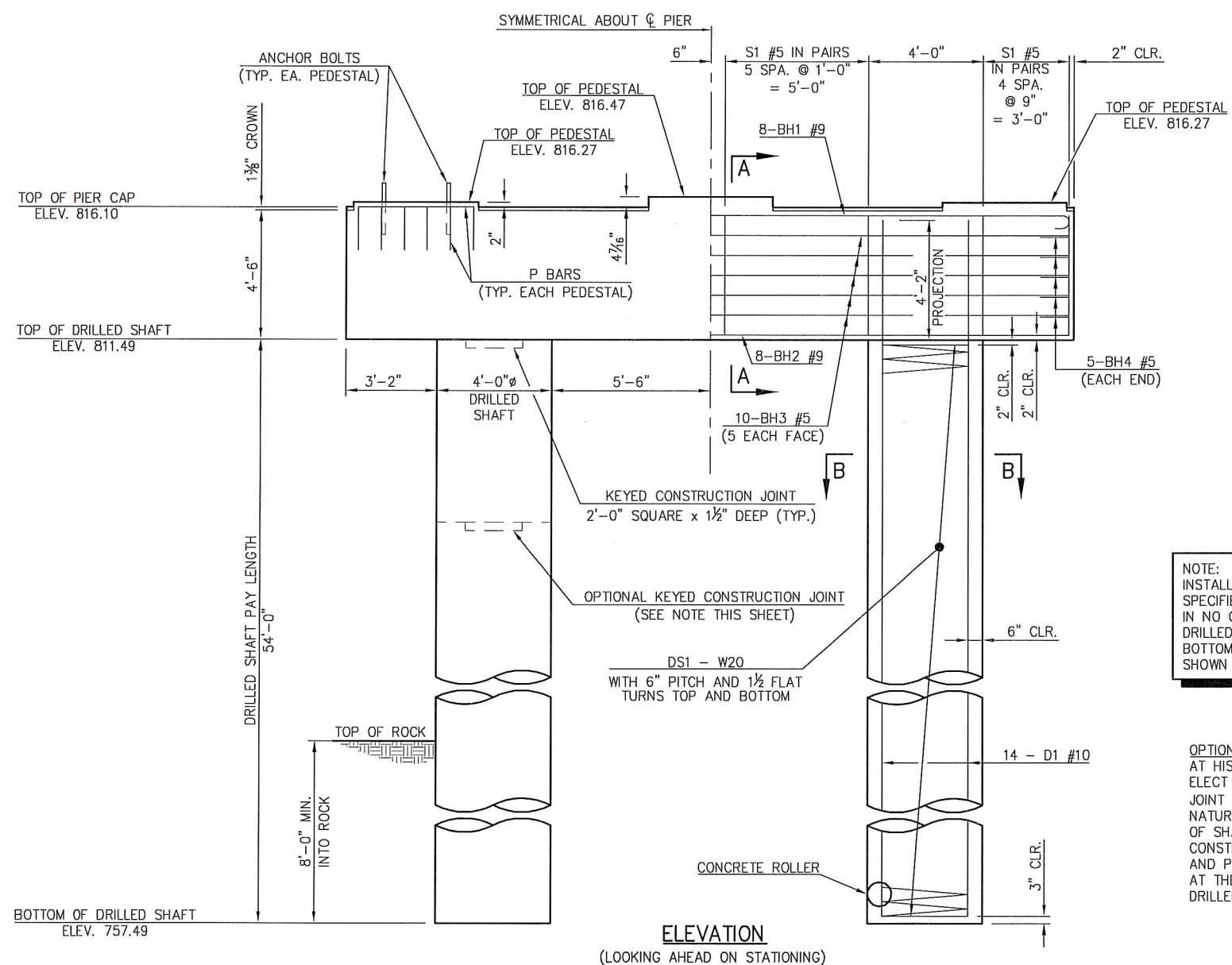
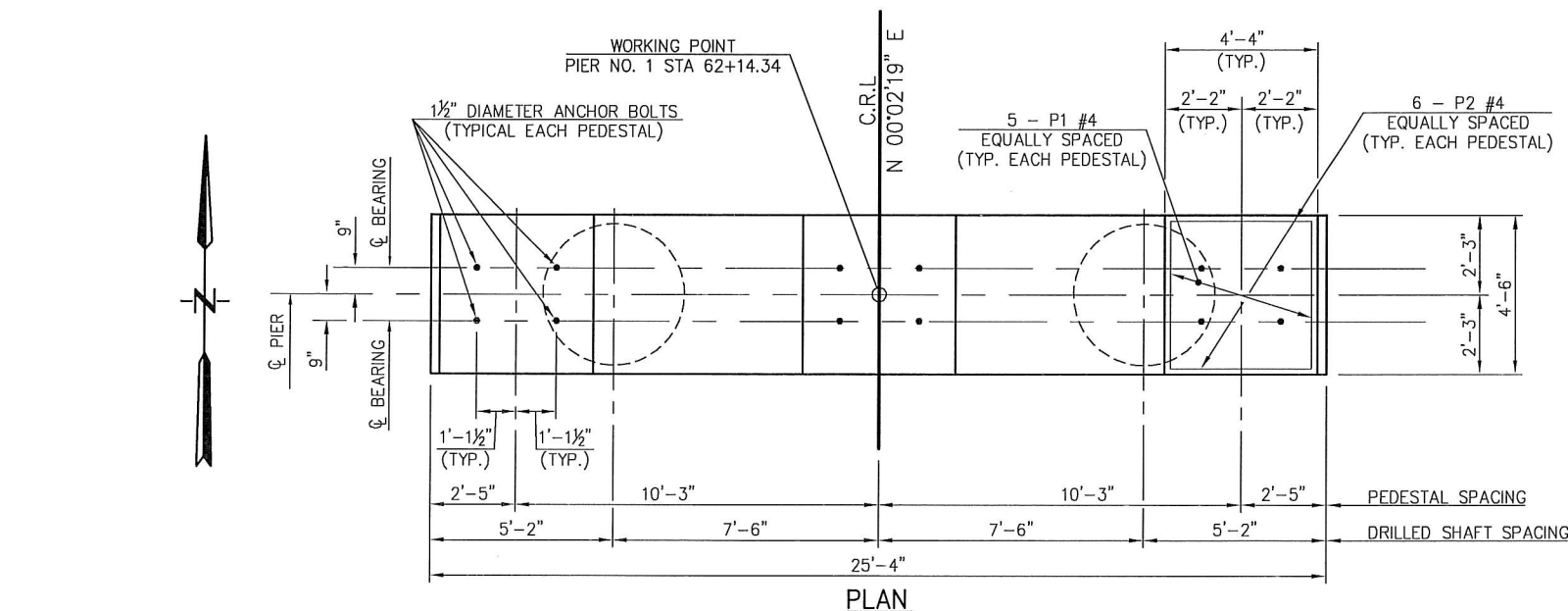


DESCRIPTION	REVISIONS	DATE



NOTE:
INSTALL DRILLED SHAFTS AT LEAST THE SPECIFIED MINIMUM DISTANCE INTO ROCK. IN NO CASE SHALL THE BOTTOM OF THE DRILLED SHAFT BE HIGHER THAN THE BOTTOM OF DRILLED SHAFT ELEVATION SHOWN IN THE PLANS.

OPTIONAL KEYED CONSTRUCTION JOINT:
AT HIS OPTION, THE CONTRACTOR MAY ELECT TO FORM A KEYED CONSTRUCTION JOINT A MINIMUM OF 1' ABOVE THE NATURAL GROUND LINE. THE PORTION OF SHAFT ABOVE THE OPTIONAL KEYED CONSTRUCTION JOINT SHALL BE FORMED AND POURED, AND SHALL BE PAID FOR AT THE UNIT PRICE PER LINEAR FOOT OF DRILLED SHAFT.

PIER QUANTITIES		
ITEM	UNIT	QUANTITY
CLASS A CONCRETE	C.Y.	19.90
REINFORCING STEEL	LB.	2,610.00
DRILLED SHAFTS 48" DIAMETER	LF.	108.00
CROSSHOLE SONIC LOGGING	EA.	1.00

Michael B. Simmons
MICHAEL B. SIMMONS, P.E. NO. 24576

6/13/2017

BR. 181A OVER LITTLE DEEP FORK BRIDGE "A"	CREEK COUNTY	Design	MZV	11/16
DETAILS OF PIER (SHEET NO. 1 OF 2)		Detail	MZV	11/16
		Check	MBS	11/16
STATE OF OKLAHOMA		Squad:	GUY	
GUY ENGINEERING SERVICES, INC.		Engr.	GUY	
JOB PRICE NO. 29407(04)		SHEET NO. B003		

Monday, June 12, 2017 2:24:58 PM
V:\13-850 Br 181A Little Deep Fork Ck- Creek 3\STRUCTURAL\DWG\850-PIER.dwg